



Technical Devices Company
NU/ERA 18 CV Wave Soldering Machine
Technical Specifications



18-Inch (450 mm) Process Width
Computer Controlled Wave Soldering Machine
(Actual machine may vary from picture above)

STANDARD FEATURES in order of **MODULE CONFIGURATION**



FLUXER MODULE

- Modular Spray Fluxer
- Constant Pressure and Flow
- Reciprocating Spray Head
- Easy removal for Air Filter
- Spray perpendicular to PCB
- Easy maintenance





PREHEATER MODULE

- 3 each 2 foot long Zones (6 FT total)
- Forced Hot Air Convection
- Topside Tunnel for Uniform Temperature
- Plug in and out quick connectors



SOLDER MODULE

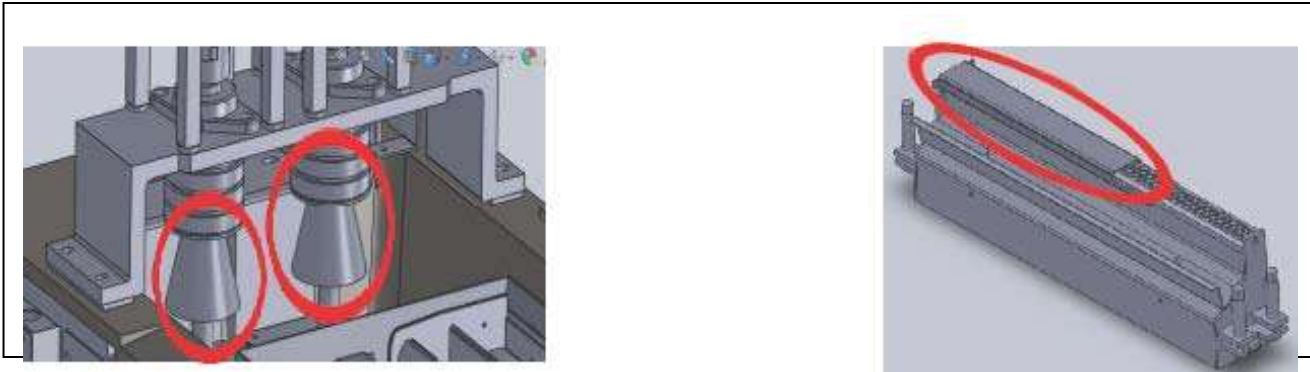
- Lead Free Process Ready Solder Pot
- **"Dancer"** and Laminar Wave Nozzles
- P.I.D. Temperature Control
- Low Dross Formation
- 1100 lb. Solder Capacity





Solder residue is limited < 0.4kg per hour.

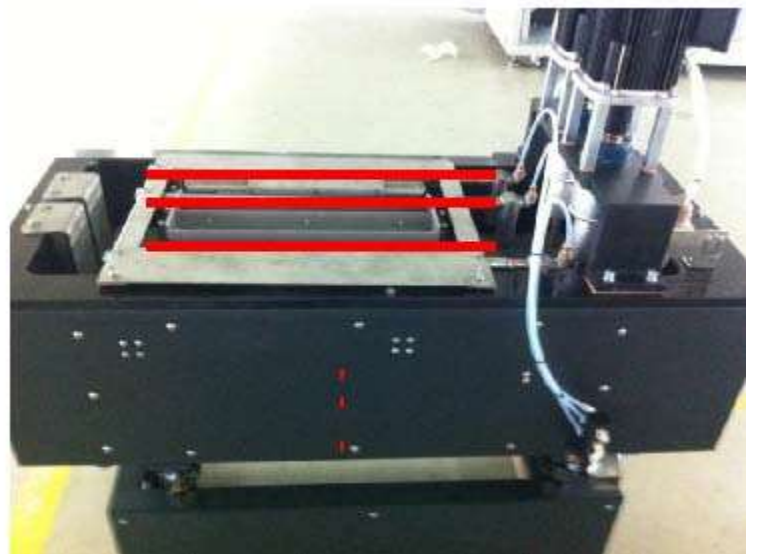
Dynamic rotating cap isolate air and limit the oxidation



The oxidation reducing cover, effectively controls the wave flowing speed, lowering the falling height and minimizing creation of the oxides.

1000ppm, 12m³/h
Test at soldering level

Pressure: 5bar
Flow rate : >18m³/h



Nitrogen Control (Optional)



CONVEYOR MODULE

- Full 18" Process Width
- Adjustable Width from 2" to 18"
- Conveyor Width Controlled by Computer
- Adjustable Conveyor Angle 4-7 degrees
- Post Wave PCB Cooling System (Top & bottom)
- Variable Speed 0-1.8 Meters Per Minute
- Standard "V" Shaped Titanium Fingers
- Special Finger Configurations Available as an Option



CABINET and STRUCTURE

- Rear Access Service Doors
- Interior Lighting
- Integral Hood Exhaust Ducting
- Front Access Process Windows
- Machine built to Rigid Technical Devices Company Specifications



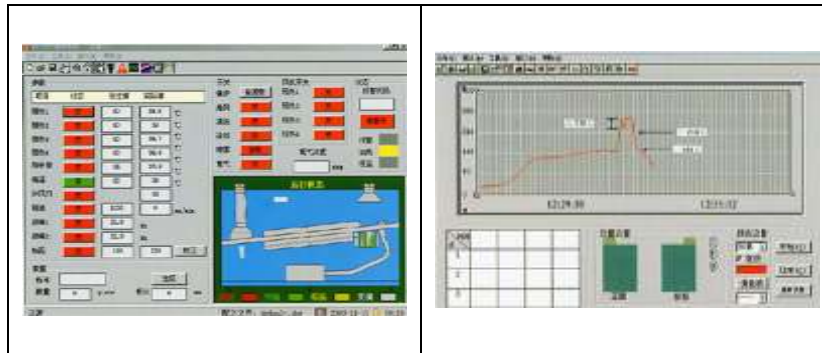
TECHNICAL DEVICES COMPANY

560 Alaska Avenue * Torrance * California 90503 * U.S.A.

A SUBSIDIARY OF WINTHER TECHNOLOGIES, INC. TEL: 310- 618-8437 * FAX: 310- 618-1543 * www.TechnicalDev.com

SYSTEM HOST COMPUTER CONTROL

- PC & PLC (Siemens) Control System
- Monitor, Keyboard and Swivel Base Assembly located at the entrance end of the machine for operator convenience
- Windows XP based Platform
- Uninterrupted Power Supply



UTILITIES:

Dimensions: 183" L x 57" W x 58" H

Plant Power: 480VAC, 3-Phase, 60Hz, 65 Amp

Plant Compressed Air: .5 MPa.

Solder Pot Capacity: 1100 lbs.