



TECHNICAL DEVICES COMPANY

A SUBSIDIARY OF WINTHER TECHNOLOGIES, INC. TEL: 310- 618-8437 * FAX: 310- 618-1543 * www.TechnicalDev.com

560 Alaska Avenue * Torrance * California 90503 * U.S.A.

Technical Devices Company *NU/ERA 18 CV Wave Soldering Machine* *Technical Specifications & Pricing*



18-Inch Process Width
Computer Controlled Wave Soldering Machine
(actual machine may vary from picture above)

STANDARD FEATURES in order of MODULE CONFIGURATION

FLUXER MODULE

- Spray Fluxer
- Constant Pressure and Flow
- Reciprocating Spray Head
- Easy maintenance



*Consistent Pressure and
flow.
Rapid flux change over.*

PREHEATER MODULE

- 2 each 3 foot long Zones
- Forced Air Convection
- Topside Tunnel for Uniform Temperature



*Easy access
Convection Preheater*

SOLDER MODULE

- Lead Free Process Ready Solder Pot
- *"Dancer"* and Laminar Wave Nozzles
- P.I.D. Temperature Control
- Low Dross Formation
- 1000 lb. Solder Capacity



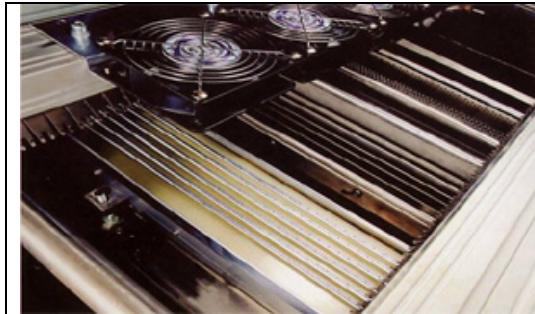
*Low Dross,
Low Maintenance
Wave*

CONVEYOR MODULE

- Full 18" Process Width
- Adjustable Width from 2" to 18"
- Variable Speed 0-1.8 Meters Per Minute
- Standard "V" Shaped Titanium Fingers
- Special Finger Configurations Available as an Option
- Conveyor Width Controlled by Computer
- Adjustable Conveyor Angle 4-7 degrees
- Post Wave PCB Cooling System (Top & bottom)



*Cooling Fan
(Standard)*



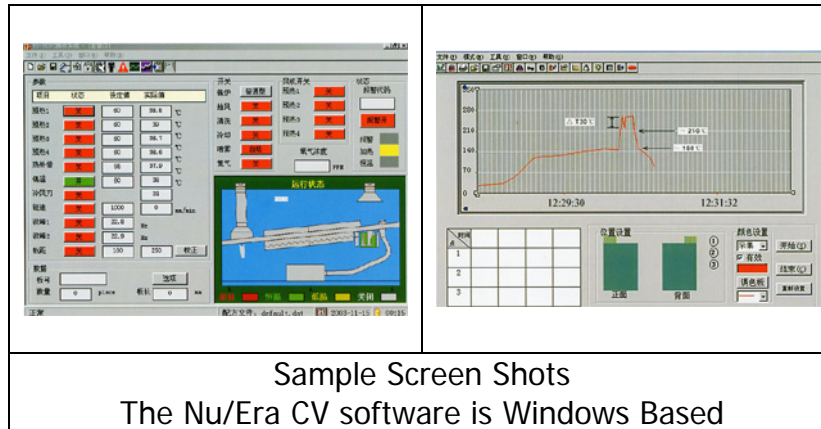
*Chiller
Water Cooling System
(Optional)*

CABINET and STRUCTURE

- Rear Access Service Doors
- Interior Lighting
- Integral Hood Exhaust Ducting
- Front Access Process Windows
- Machine built to Rigid Technical Devices Company Specifications

SYSTEM HOST COMPUTER CONTROL

- PC & PLC (Siemens) Control System
- Monitor, Keyboard and Swivel Base Assembly located at the entrance end of the machine for operator convenience
- Windows XP based Platform
- Uninterrupted Power Supply



UTILITIES:

Dimensions: 183" L x 57" W x 58" H
Plant Power: 480VAC, 3-Phase, 60Hz, 65 Amp
Plant Compressed Air: .5 MPa.
Solder Pot Capacity: 850 lbs.